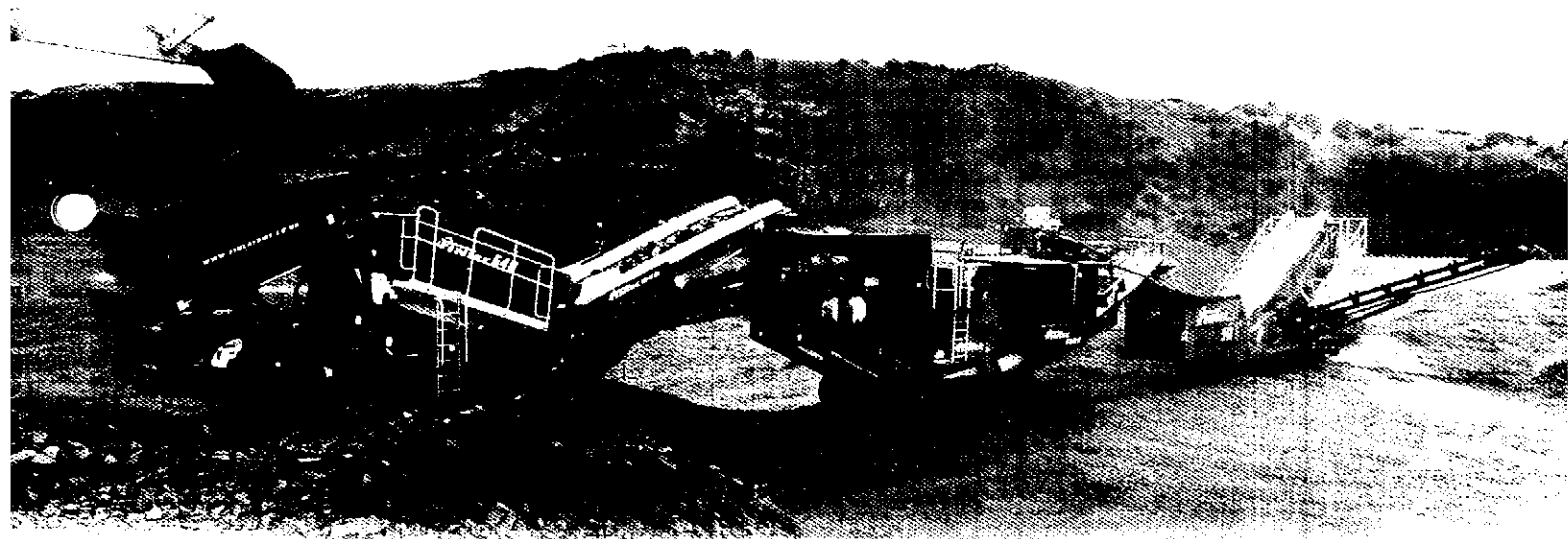




FINTEC

**Crushing &
Screening
Equipment**



*success knows
no boundaries....*

FINTEC 542



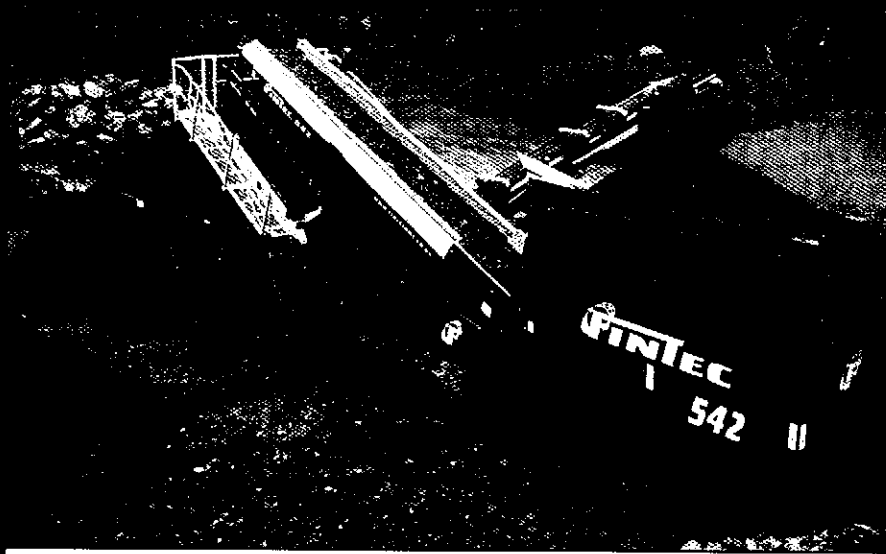
- High capacity 12' x 5' (3.65m x 1.5m) on both screen decks
- Additional 5° screening angle inbuilt on bottom deck
- Up to 20% more screening area than most of our competitors
- Maximum screening efficiency
- Suitable for screening, recycling, demolition, quarrying, top soil, coal and many other products

- Capacité élevée sur les deux étages 12' x 5' (3.65m x 1.5m)
- L'étage inférieur bénéficie d'une pente accentuée de 5°
- Plus de 20% en plus de surface de criblage par rapport aux cribles de la concurrence
- Efficacité de criblage maximum
- Adapté pour le criblage en applications de recyclage, démolition, carrières de granulats, traitement des couches arables (terreux), charbon et bien d'autres produits

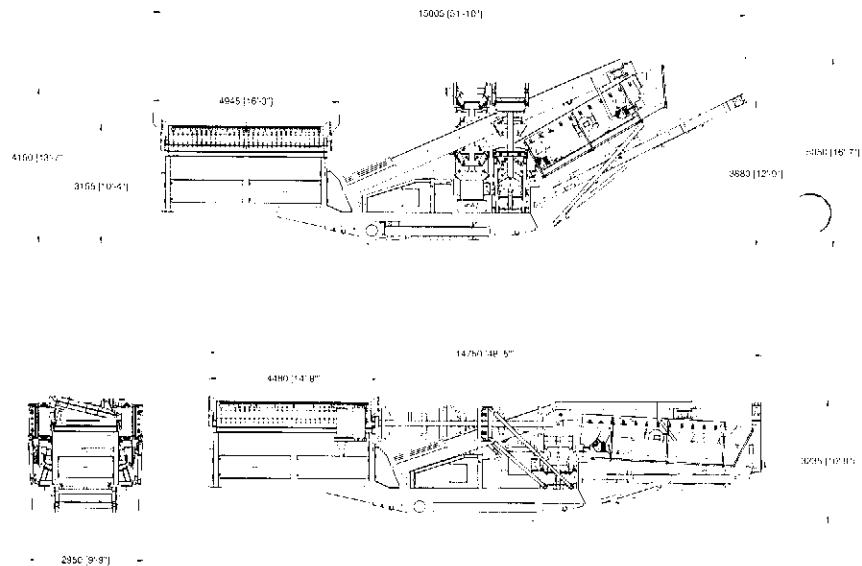
- Superficie vagliante di elevata capacità 12' x 5' (3.65m x 1.5m reali) su entrambi i piani vaglianti
- Incrementata la possibilità di inclinare il piano vagliante inferiore di ulteriori 5°
- Fino al 20% in più di area vagliante rispetto alla maggior parte della concorrenza
- Massima efficienza nella fase di vagliatura
- Adatto per la vagliatura nel riciclaggio, demolizione, cave, terreno sciolto, carbone e molti altri prodotti

- Alta capacidad en ambas mallas 12' x 5' (3.65m x 1.5m)
- Angulo de quebrado adicional de 5° en la malla inferior
- Hasta 20% más area de cribado que nuestros competidores
- Eficiencia de cribado máxima
- Idónea para cribado de materiales reciclados, materiales de demolición, cantera, carbón, tierra y muchos otros productos

- Hohe Siebleistung 12' x 5' (3.65m x 1.5m) auf beiden Siebdecks
- Zusätzliche 5° Siebneigung auf der ersten Hälfte des unteren Siebdecks
- Bis zu 20% größere Siebfläche als marktüblich
- Maximale Siebleistung
- Besonders geeignet für die Absiebung von Recycling-, Abbruch-, Steinbruch-, Abraum- und Kohlehaufwerk sowie viele andere Materialien



Machine Specification



Screenbox	12ft x 5ft (3.65m x 1.5m)
Reject Grid	12ft Remote Control Tipping with Bypass Chute (optional)
	14ft Remote Control Tipping (standard)
Engine Type	CAT Water Cooled Diesel
Engine Power	74kw (99hp)
Hopper Capacity	8m ³ (10.4yd ³)
Beltfeeder	1050mm Inclined 3 ply (42") Variable Speed
Main Conveyor	1050mm 3 ply (42")
Side Conveyors	650mm Chevron (26") Variable Speed
Tail Conveyor	1200mm 3 ply (48")
Machine Weight	26 Tonnes (29.12 US Tonnes)
Vibrating Grid	12ft Double Deck
Shredder	Single Shaft



FINTEC 570



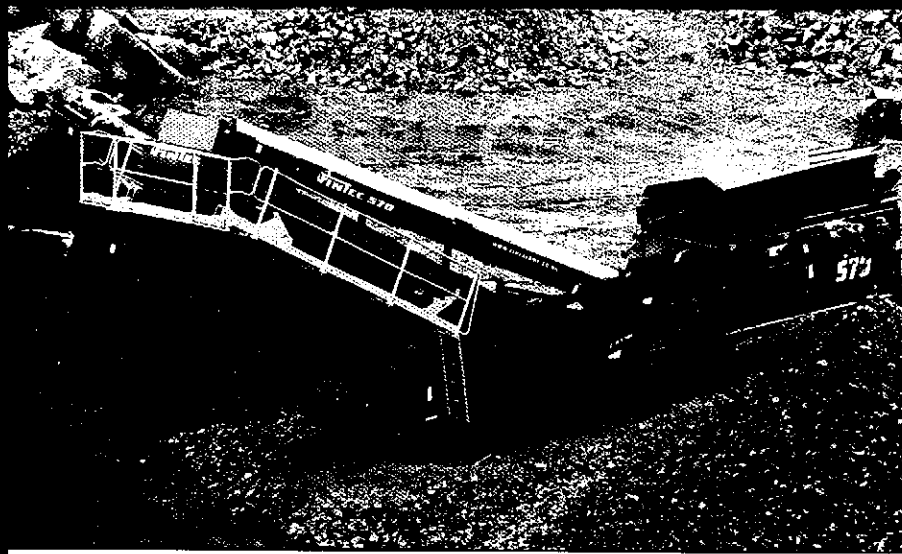
- High capacity 18' x 5' (5.45m x 1.5m) on both screen decks
- Additional 5° screening angle inbuilt on bottom deck
- Up to 20% more screening area than most of our competitors
- Maximum screening efficiency
- Suitable for screening, recycling, demolition, quarrying, top soil, coal and many other products

- Capacité élevée sur les deux étages 18' x 5' (5.45m x 1.5m)
- L'étage inférieur bénéficie d'une pente accentuée de 5°
- Plus de 20% en plus de surface de criblage par rapport aux cribles de la concurrence
- Efficacité de criblage maximum
- Adapté pour le criblage en applications de recyclage, démolition, carrières de granulats, traitement des couches arables (terreux), charbon et bien d'autres produits

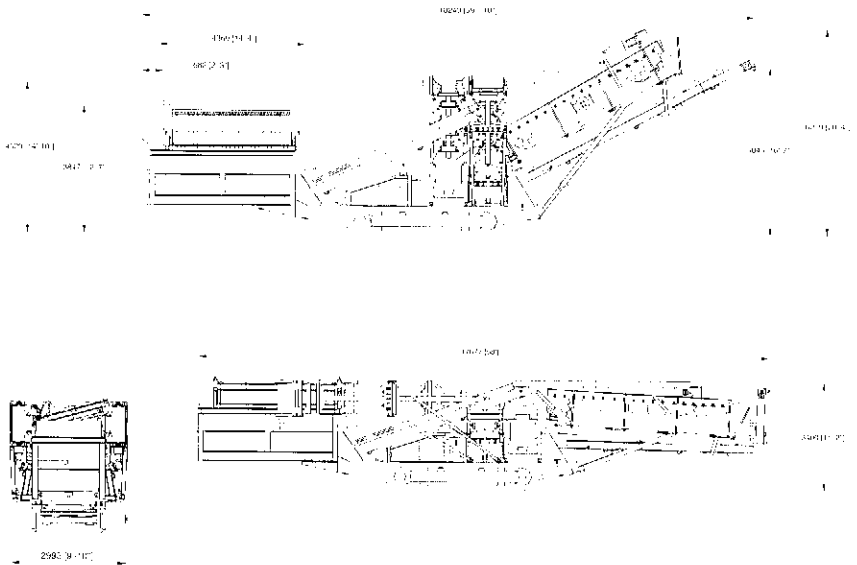
- Superficie vagliante di elevata capacità 18' x 5' (5.45m x 1.5m reali) su entrambi i piani vaglianti
- Incrementata la possibilità di inclinare il piano vagliante inferiore di ulteriori 5°
- Fino al 20% in più di area vagliante rispetto alla maggior parte della concorrenza
- Massima efficienza nella fase di vagliatura
- Adatto per la vagliatura nel riciclaggio, demolizione, cave, terreno sciolto, carbone e molti altri prodotti

- Alta capacidad en ambas mallas 18' x 5' (5.45m x 1.5m)
- Angulo de quebrado adicional de 5° en la malla inferior
- Hasta 20% más area de cribado que nuestros competidores
- Eficiencia de cribado máxima
- Idónea para cribado de materiales reciclados, materiales de demolición, cantera, carbón, tierra y muchos otros productos

- Hohe Siebleistung 18' x 5' (5.45m x 1.5m) auf beiden Siebdecks
- Zusätzliche 5° Siebneigung auf der ersten Hälfte des unteren Siebdecks
- Bis zu 20% größere Siebfläche als marktüblich
- Maximale Siebleistung
- Besonders geeignet für die Absiebung von Recycling-, Abbruch-, Steinbruch-, Abraum- und Kohlehäufwerk sowie viele andere Materialien



Machine Specification



Screenbox	18ft x 5ft (5.45m x 1.5m)
Reject Grid	12ft Remote Control Tipping with Bypass Chute (standard) 14ft Remote Control Tipping (optional)
Engine Type	CAT Water Cooled Diesel
Engine Power	74kw (99hp)
Hopper Capacity	8m ³ (10.4yd ³)
Beltfeeder	1200mm Inclined 3 ply (48") Variable Speed
Main Conveyor	1050mm 3 ply (42")
Side Conveyors	800mm Chevron (32") Variable Speed
Tail Conveyor	1200mm 3 ply (48")
Machine Weight	34 Tonnes (38.08 US Tonnes)
Vibrating Grid	12ft Double Deck



FINTEC

640



- 2 bearing 12' x 5' (3.65m x 1.5m) heavy duty screenbox
- Fixed access walkway around screenbox
- Hydraulic jacking system for bottom deck serviceability
- Steel apron feeder
- Suitable for screening, recycling, demolition, primary & secondary quarry material as well as many other products

- Crible renforcé à deux roulements 12' x 5' (3.65m x 1.5m)
- Plate-forme d'inspection fixe autour du crible
- Accès au tamis inférieur facilité par le relevage hydraulique du crible
- Alimentateur à tablier métallique
- Adapté pour la récupération et le tamisage de matériaux de démolition, de tout-venant de carrière et de granulats ainsi qu' une multitude d'autres produits.

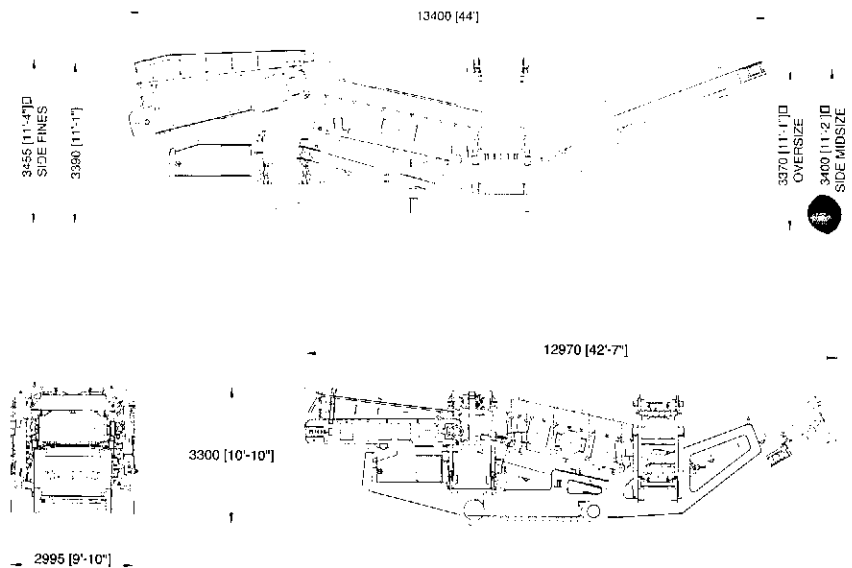
- Gruppo di vagliatura con doppio cuscinetto dimensioni 12' x 5' (3.65m x 1.5m) per prestazioni anche gravose
- Passerella d'accesso fissa lungo tutto il perimetro del gruppo di vagliatura
- Sistema idraulico di sollevamento per un facile accesso al piano inferiore (controlli e assistenza)
- Alimentatore in acciaio a piastre snodate
- Particolarmente adatto nella vagliatura in genere, nel riciclaggio, nella demolizione, nella lavorazione primaria e secondaria di materiale di cava e per molte altre applicazioni

- 2 cribas para trabajos pesados de 12' x 5' (3.65m x 1.5m)
- Pasarela de acceso fija alrededor de la criba
- Sistema de elevación hidráulico para el piso inferior
- Alimentador de placas de acero
- Apropiado para cribado, reciclaje, demolición, material de canteras primario y secundario, así como para muchos otros productos

- Kreisschwingsieb 12 x 5 Zoll (3.65m x 1.5m) schwerer und robuster Siebkasten
- Starre Bühne hinter dem Siebkasten mit seitlichen Laufstegen um Siebkasten
- Hydraulische Hebevorrichtung, leichter Zugang zu dem Siebkasten im Unterdeckbereich
- Stahlplattenband
- Geeignet zur Absiebung von Recycling, Abbruch, Strassenabbruch, Steinbruch, Sand & Kies und anderen siebschwierigen Materialien.



Machine Specification



Screenbox	12ft x 5ft (3.65m x 1.5m)
Engine Type	CAT Water Cooled Diesel
Engine Power	74 Kw (99hp)
Hopper Capacity	6m ³ (7.89yd ³)
Machine Weight	28.9 Tonnes (31.8 US Tonnes)
Oversized Conveyor	1200mm 3 ply Chevron (48")
Transfer Conveyor	1200mm 3 ply (48")
Side Conveyor (Midsize)	800mm 3 ply Chevron (32")
Tail Conveyor (Fines)	800mm 3 ply (32")

American specification to be confirmed



FINTEC 1107



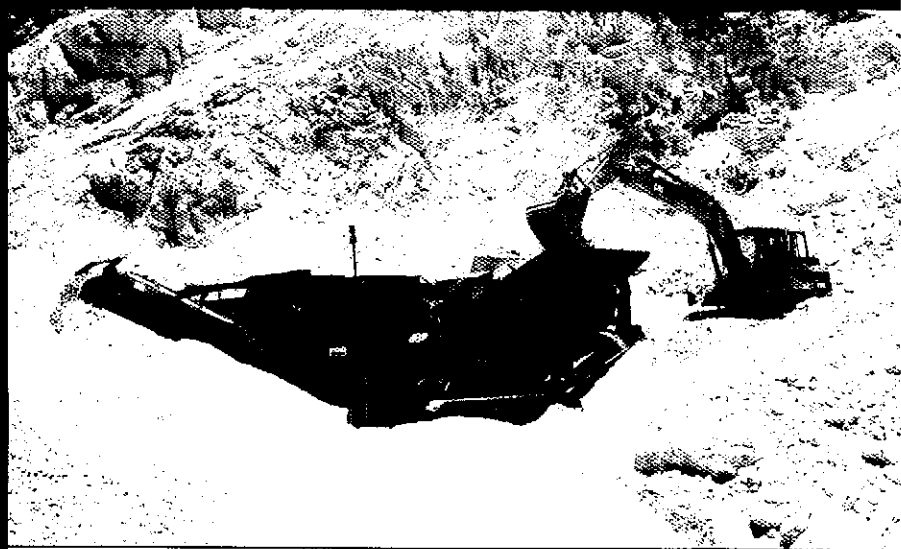
- Sandvik SRP 1100mm x 700mm (44" x 28") Single Toggle Primary Jaw Crusher
- Fully Hydraulic Wedge-type system for CSS adjustment
- Hydrostatic Crusher drive complete with reverse jaw movement
- Feeder controlled by a level monitoring system in the crusher
- Suitable for crushing, recycling, demolition, quarry and many other applications

- Concasseur primaire à mâchoires à simple effet 1100mm x 700mm (44" x 28") Sandvik SRP
- Ajustement du serrage par coins de réglage positionnés hydrauliquement
- Entraînement hydrostatique du concasseur avec possibilité de rotation inversée de la mâchoire mobile
- Alimentateur régulé par gestionnaire de niveau dans le concasseur
- Adapté pour le concassage de matériaux de carrières, matériaux de démolition et bien d'autres encore

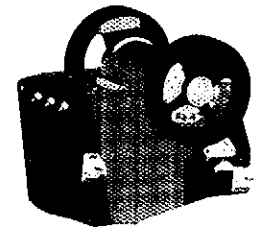
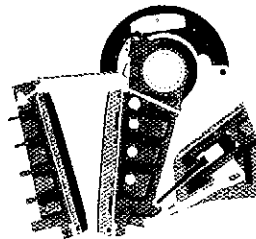
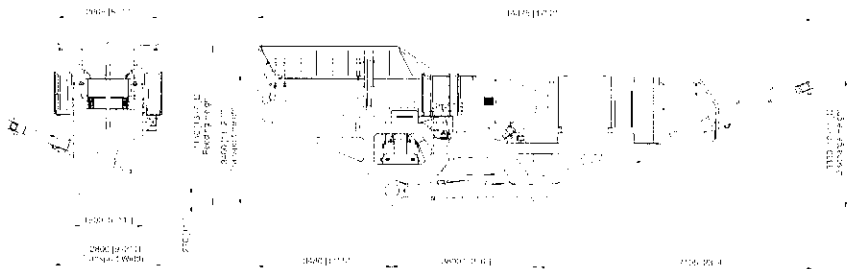
- Frantoio primario a mascelle con singola ginocchiera Sandvik SRP 1100mm x 700mm (44" x 28")
- Regolazione idraulica del CSS (chiusura scarico materiale)
- Trasmissione idrostatica del frantoio con movimento reversibile della mascella
- Alimentatore controllato da un sistema di monitoraggio del livello presente nel frantoio
- Adatto per la frantumazione nel riciclaggio, demolizione, cave e molte altre applicazioni

- Machacadora de mandíbulas de simple efecto Sandvik SRP 1100mm x 700 mm (44" x 28")
- Sistema tipo cuña completamente hidráulico para ajuste del lado cerrado del triturador (CSS)
- Accionamiento hidrostático del triturador con movimiento reversible de mandíbula
- Alimentador controlado por sistema de indicador de nivel en la machacadora
- Apropiada para trituración en reciclaje, demolición, canteras y muchas otras aplicaciones

- SANDVIK SRP 1100mm x 700mm (44" x 28") Einschwingen - Backenbrecher
- Vollhydraulische Keil-Spaltverstellung
- Hydrostatischer Brecherantrieb mit Rücklaufmöglichkeit
- Füllstandsüberwachung im Brecher
- Einsetzbar für Recycling, Abruchmaterial, Naturstein und viele andere Einsatzgebiete



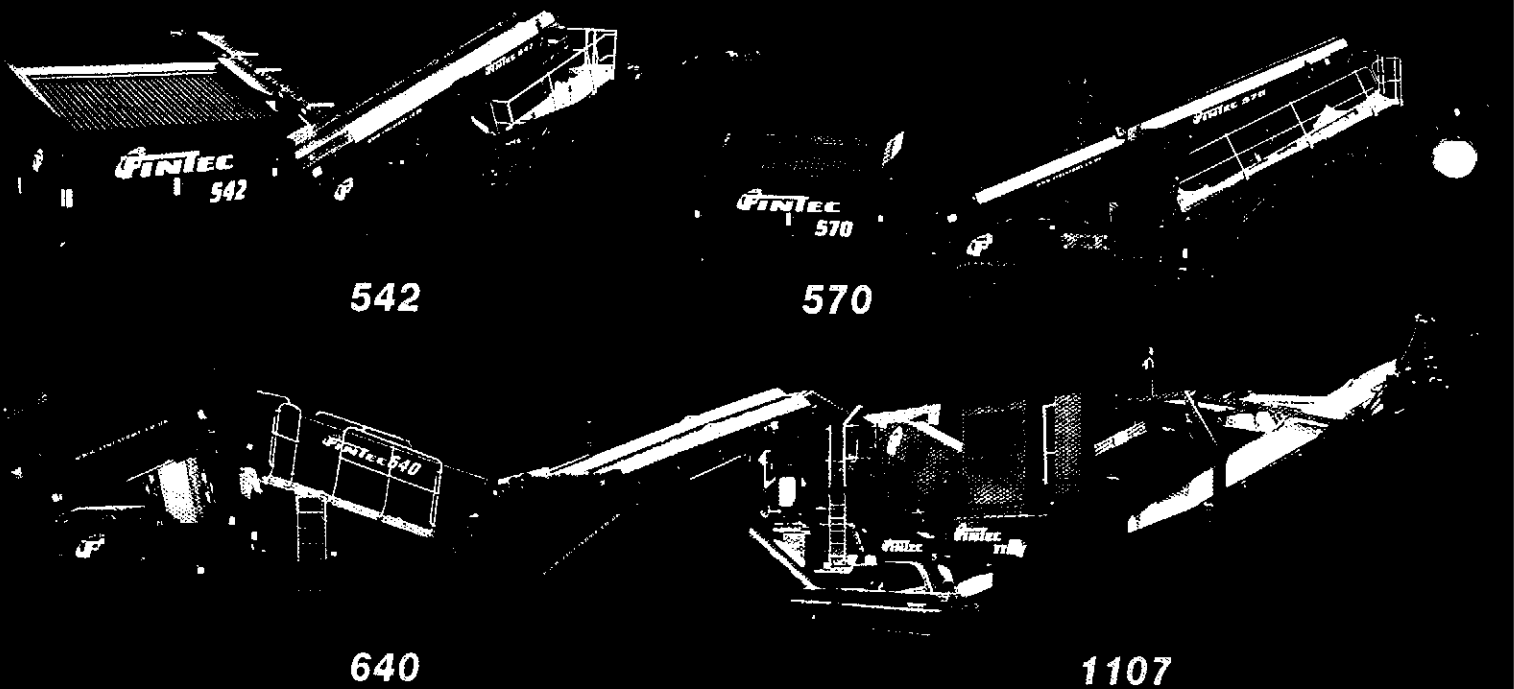
Machine Specification



Crusher	1100 x 700mm (44" x 28") Sandvik Jaw
Feeder	4.1m x 1.04m (13'6" x 3'6")
Engine Type	CAT (C9) or DEUTZ (BF6M1015C)
Engine Power	CAT - 260kw (350hp) DEUTZ - 273kw (365hp)
Hopper Capacity	7m ³ (9.2yd ³)
Main Conveyor	1000mm 3 ply Extra Heavy Duty (42")
Side Conveyor	650mm 3 ply (26")
Weight	42.5 Tonnes (50 US Tonnes) (without options)
Recommended Setting Range	40 - 125mm (1 1/2" - 5") Recycling Only 75 - 175mm (3" - 7") Quarrying Only



FINTEC



FINTEC (NI) LTD

Tullyvannon, Ballygawley, Co.Tyrone, Northern Ireland. BT70 2HW

Tel : +44 (0) 28 8556 7799 | Fax : +44 (0) 28 8556 7007
Email : sales@finlaybme.co.uk | Web : www.fintecni.com



**OPPERMANN
& FUSS GmbH**
Siebanlagen - Brechanlagen

Carl-Zeiss-Straße 10
D-25451 Quickborn
Tel. 0 41 06-77 82 - 0
Fax 0 41 06-77 82 20
Internet: www.oppermann-fuss.de
e-mail: team@oppermann-fuss.de