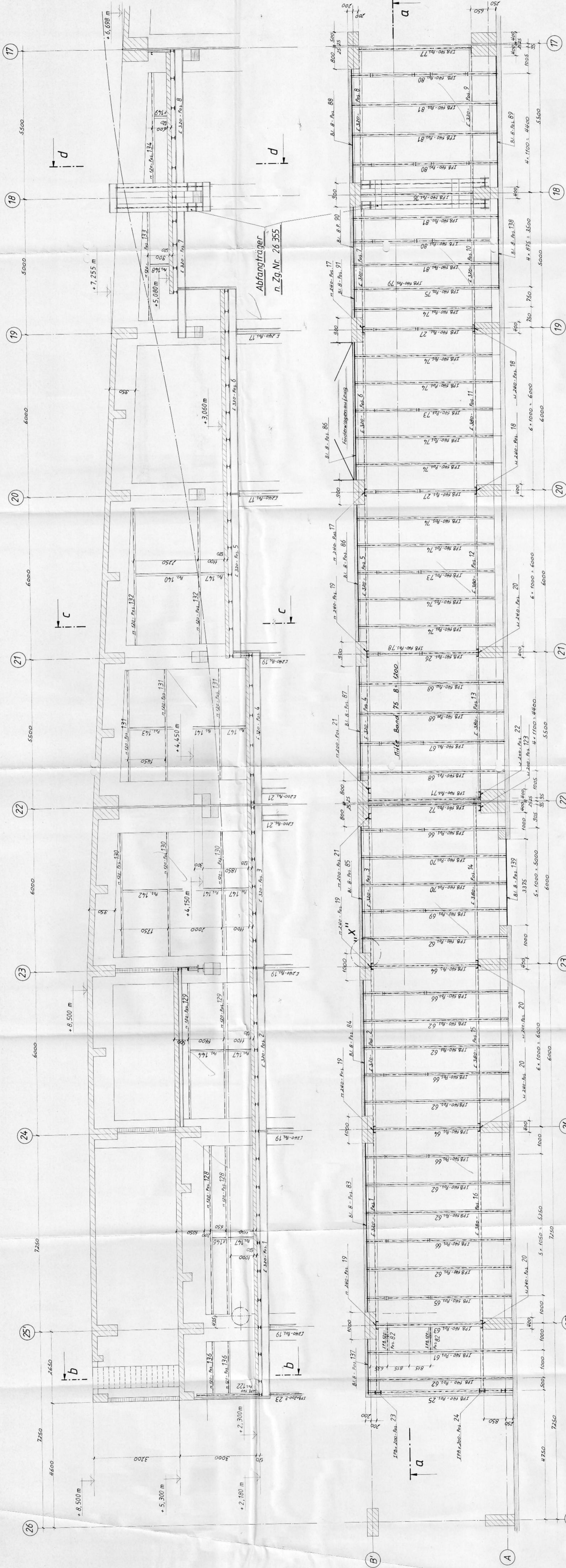
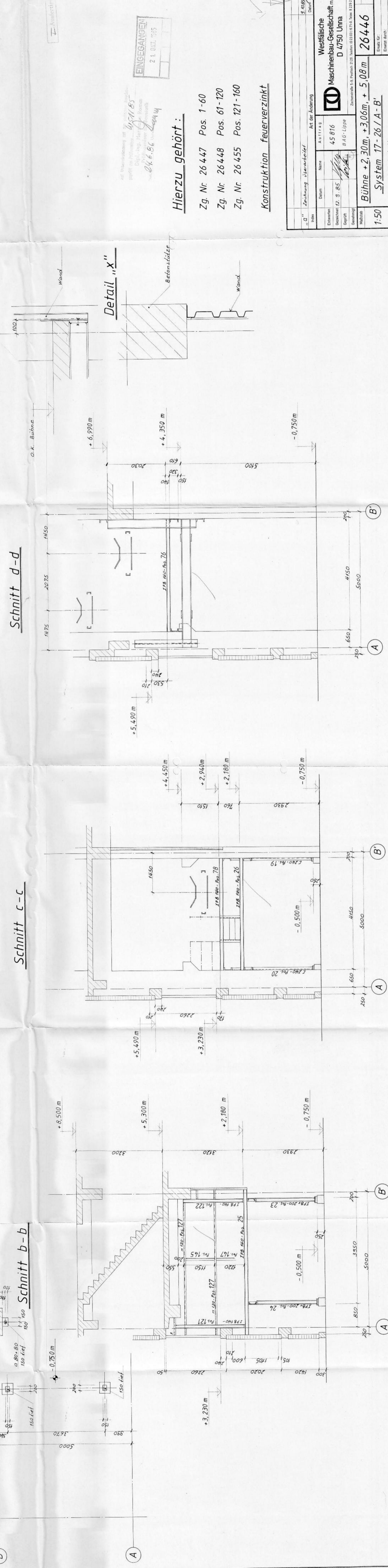


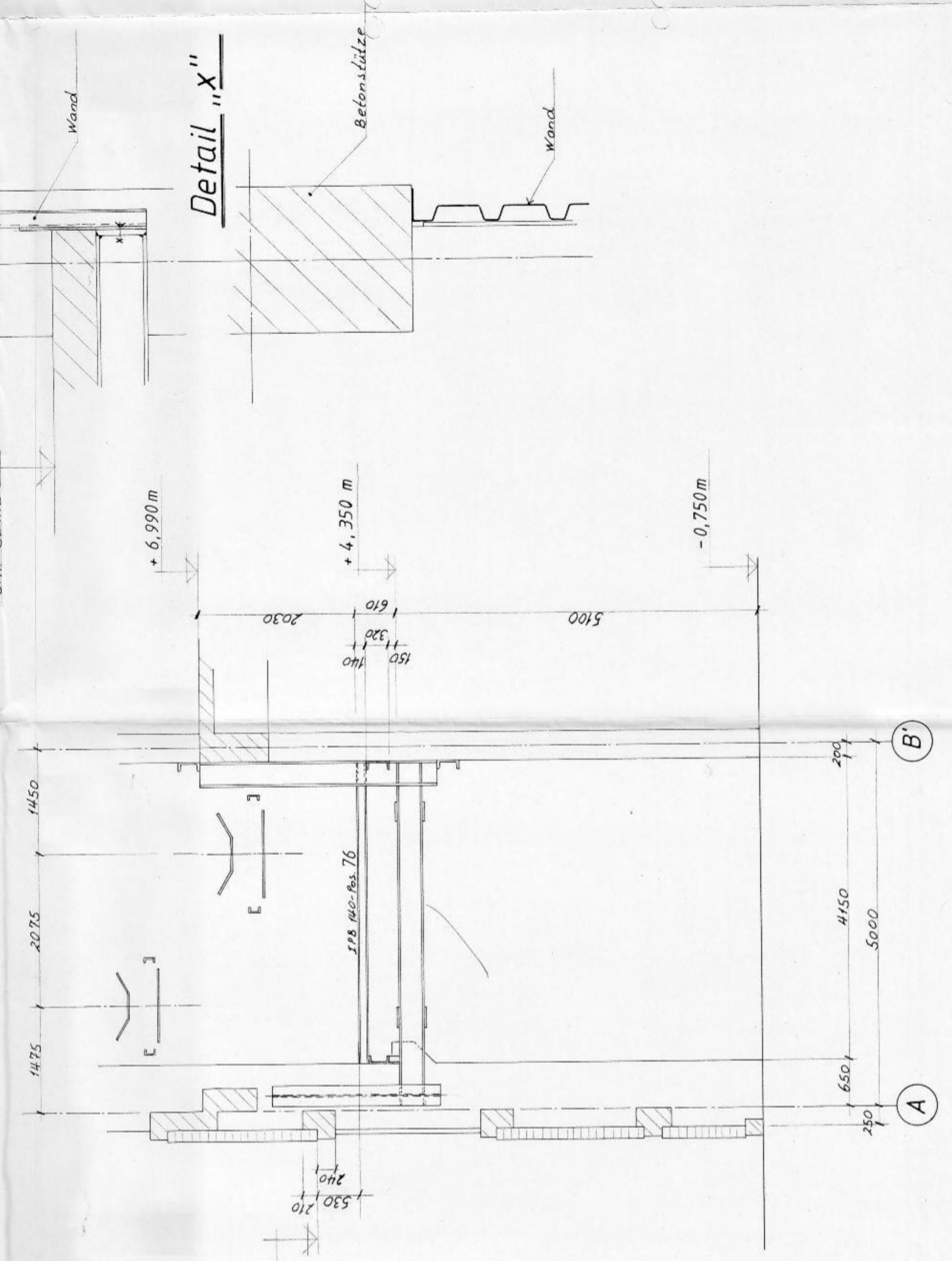
Schnitt a-a



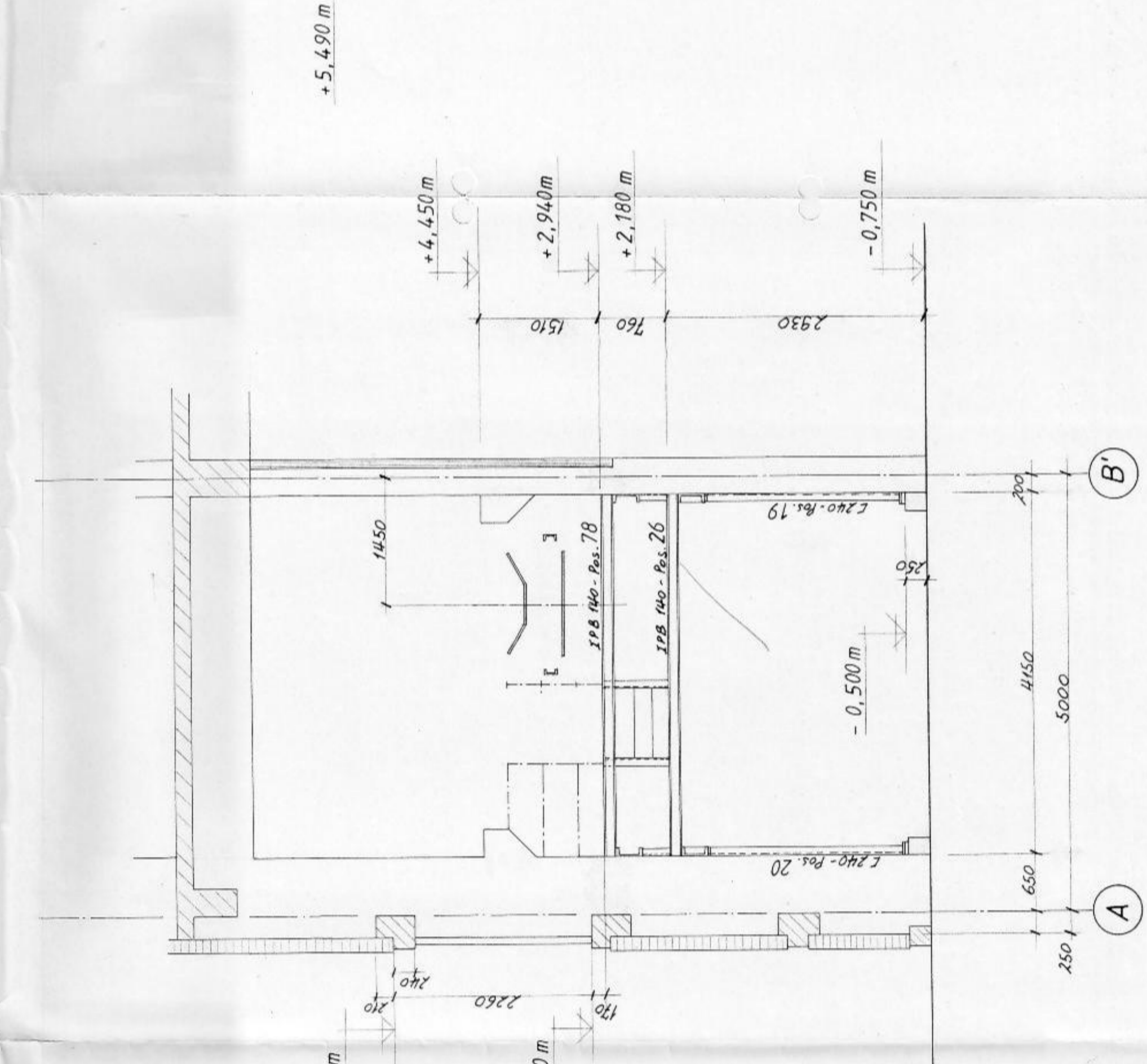
Schnitt b-b



Schnitt d-d



Schnitt c-c



Hierzu gehört:

- Zg. Nr. 26447 Pos. 1-60
- Zg. Nr. 26448 Pos. 61-120
- Zg. Nr. 26455 Pos. 121-160

Konstruktion feuerverzinkt

Zustimmung		Art der Abtragung	
21.03.2015		45 816	
45 816		BAE-Lippe	
1:50		Westfälische Maschinenbau-Gesellschaft	
1:50		D 4750 Uma	
1:50		Bühne + 2,30m, + 3,06m, + 5,08m	
1:50		System 17- 26 / A - B'	
1:50		Westerbau	
1:50		26446	